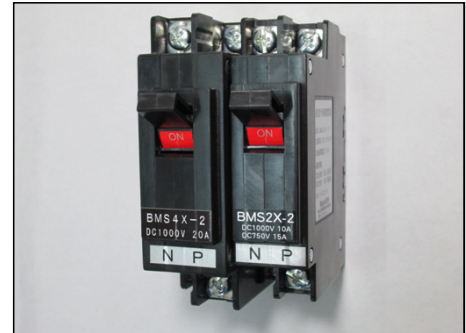


# BMS□X-2 type Direct current manual operation switch

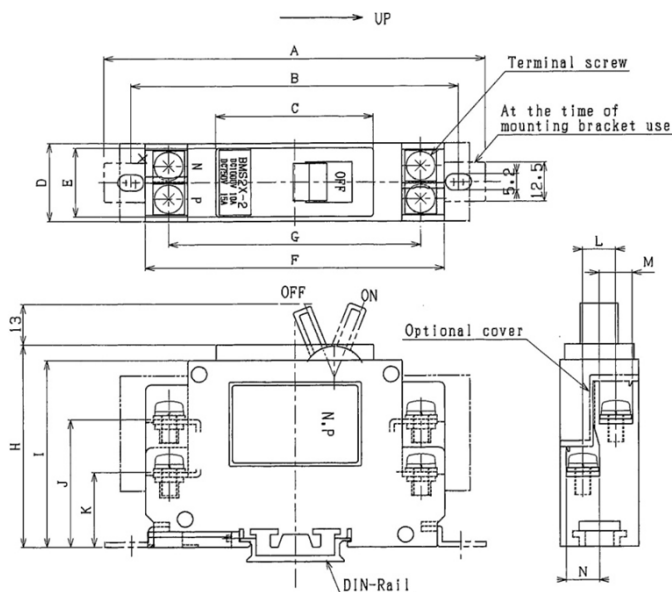
- BMS2X-2 type
  - 1000VDC 10A R-load
  - 750VDC 15A R-load
- BMS4X-2 type
  - 1000VDC 20A R-load
- Rated insulation voltage 1000V
- Bipolar simultaneous interception type
- Lever operating mode



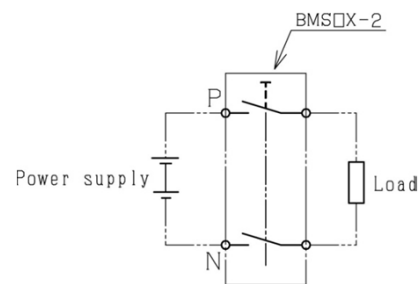
## Rating

Item	Performance	
	BMS2X-2	BMS4X-2
Type	BMS2X-2	BMS4X-2
Rated insulation voltage	1000VDC	
Rated supplied current	15A	40A
Rated breaking current	1000VDC 10A (R-load)	1000VDC 20A (R-load)
	750VDC 15A (R-load)	
	Bipolar simultaneous interception	
Conformity electric wire	5.5mm <sup>2</sup>	14mm <sup>2</sup>
Screw size	M5 × 12 (Steel screw)	
Insulation resistance	20MΩ or by 1000VDC megger	
Power frequency withstand voltage	3000VAC 1min	
Lightning impulse withstand voltage	8000V 1.2/50 μ S positive/negative polarity, 3 times	
Mounting	DIN-Rail system / fixed system	
Ambient temperature	-25 ~ 70°C	
Relative humidity	45 ~ 85%	
Mechanical life	10000 times	
Electrical life	1000 times	
Others	mechanical holding type	

## Outside drawing



## Connection Diagram



## Dimensions list

Sign	BMS2X-2	BMS4X-2	Sign	BMS2X-2	BMS4X-2
A	121	126	H	65	70
B	104	109	I	60	65
C	50	49	J	41	45
D	25	30	K	24	25
E	22	25	L	10.5	13
F	95	100	M	10.5	12.5
G	80	85	N	10.5	12.5

### 【Business Place】

Head office: Suwa) 0266-27-8910

Tokyo) 03-3834-9722

Osaka) 06-6353-0221

Nagoya) 0568-82-4271

Sendai) 022-773-5861

Tosu) 0942-83-0564

URL <http://washion.co.jp/>